

KPM - OMEGA
Description and mounting instruction

Kollmorgen Steuerungstechnik GmbH
Broichstraße 32
51109 Köln
Telefon +49 (0) 221 89 85 0
Telefax +49 (0) 221 89 85 30
<http://www.kollmorgen.de>
Email info@kollmorgen.de

Kollmorgen Lift Controls Ltd.
Unit 2, The Office Village
Chester Business Park
Chester, Cheshire, CH4 9QP
Telephone + 44 (0) 1244-67 85 49
Fax +44 (0) 1244-68 15 78
Email info@kollmorgen.co.uk

Contents

1	Introduction	3
2	Safety Instructions:	3
2.1	General Explanations.....	3
2.2	Start up and Service.....	3
3	Start-Up	4
3.1	KPM OMEGA Version.....	4
4	Service Instructions.....	6

1 Introduction

The Kollmorgen Positioning System Mechanic Kit (KPM) type <<OMEGA>> is used for holding a transmitter for an absolute - shaft copying system.

Mechanic-Kit construction:



toothed belt- mounting:

headroom, shaft-pit

Encoder type:

absolute value

Encoder assembly:

cabin

Shaft height:

max. 120 m

Travelling speed:

max. 4 m/s

Assembly works by:

2 persons

2 Safety Instructions:

2.1 General Explanations



HAZARD

designates an immediately threatening danger for people's life and health.



WARNING

designates a possibly hazardous situation. There could be very serious injuries or death if this warning is ignored. It also warns about dangers to machines, materials or the environment.

2.2 Start up and Service



HAZARD

You are exposed to the dangers of getting crushed or caught in machines, the dangers from clothing and body parts getting drawn into rotating equipment components and dangers from falling off of objects during start-up and service work. Please comply with all safety regulations for installing lifts and take the appropriate safety precautions.



WARNING

Start-up work may only be done by persons who have acquired the capability due to the expertise they have acquired by vocational education, professional experience and recent work in this area.

Please bear the fact in mind that two persons should do start-up work depending upon the mechanic kit used.

Only use original parts from the mechanic kit.

Please follow all of the steps listed on start-up work in the chapters of the mechanic kit used.

3 Start-Up

3.1 KPM OMEGA Version



INSTRUCTIONS

The instructions below describe the installation and start-up of the mechanic kit on the cabin.

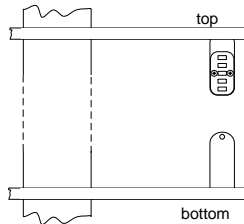


Please avoid mechanical shocks and vibrations for the alignment of the mechanics, that could damage or destroy the electronic equipment!

steps for start up	remarks	
<p>1 Check the material supplied against the parts list attached</p>		
<p>2 Mount the C profile rail at the end of the counterweight guide rail in the shaft headroom and shaft pit.</p>		<p>When mounting, please ensure the following:</p> <ul style="list-style-type: none"> there is a minimum space of the lower C profile rail of 1 m to the shaft pit bottom.
<p>3 Align the C profile rail at a 90° angle to the counterweight guide rail.</p>		

steps for start up

- 4 Mount and position the retention sheets on the C profile rails.

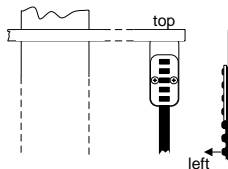


remarks

Please ensure the following:

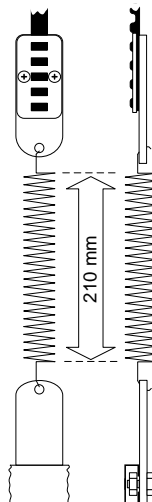
- the later position of the mechanic kit on the cabin for the position of the retention sheet on the upper C profile rail.
- mount the retention sheet on the lower C profile rail at the same position as above.

- 5 Fasten the toothed belt on the upper restraining angle and lower the toothed belt into the shaft.



When mounting, make sure that the teeth of the belt always point to the left regardless of whether the restraining angle is mounted on the left or right guide rail of the counterweight.

- 6 Connect the lower end of the toothed belt with the retention sheet of the spring so that the spring is tensioned over a length of 210 mm.

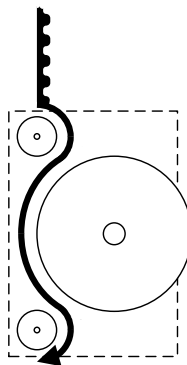


Make sure that the toothed belt is twist-free.

Cut off the excess length of the toothed belt after mounting the retention sheet.

Mounting tip: Start off by guiding toothed belt at an angle through the fastening plate to ensure that the belt does not tilt when it is guided into the recesses of the plate.

- 7 Mount the mechanic kit on the cabin.



Proceed as follows:

1. remove the two screws for locking the toothed belt on the mechanic kit.
2. align the position of the mechanic kit on the toothed belt.
3. fasten the mechanic kit on the cabin.
4. guide the toothed belt over the toothed belt pulley.
5. mount the screws to the toothed belt safety on the mechanic kit again.

steps for start up		remarks
8 Make a final control trip.		<p>Check to make sure that</p> <ul style="list-style-type: none"> the belt is twist-free and properly aligned. the spring does not touch any other mounted components. Note that noise and vibration will be caused if the tooth belt is not mounted in line with the sheave!

4 Service Instructions



INSTRUCTIONS for the tension springs

Check the spring tension according to the specifications in the start-up instructions at least once a year because incorrect spring tension might damage the transmitter and toothed belt and it also has an impact on the availability and operational safety of the lift.



INSTRUCTIONS for the toothed belt

The toothed belt is service-free, which means that you should neither oil the belt nor treat it with talcum powder or anything else.



INSTRUCTIONS for the roller on the transmitter and reversing gear

The ball bearings on the rollers are service-free, which means that the rollers should not be oiled.