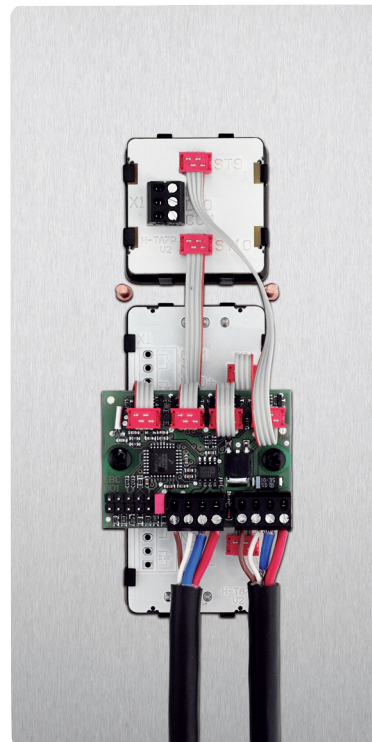


Kollmorgen Shaft Bus System (KSB)



Kollmorgen's shaft bus system is based upon using established CAN bus technology, providing a simple, cost-effective serial connection of shaft signals to the MPK 400 Control System.

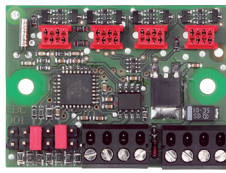
For ease of assembly, the space-saving shaft modules are integrated into the external landing push stations. Connection is further simplified by a pluggable pre-configured bus cable.

For the landing calls, push button series T25 and ST40 can be combined with various types of display. Mounting boxes are also available from stock.

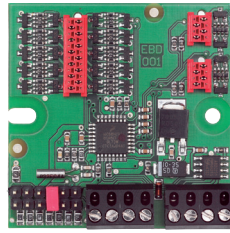
Ready for installation at the point of delivery, this means full pre-wiring and mounting, clearly addressed for each and every floor. Please refer to the table below for associated part names and functions. All units are available on short delivery at very competitive prices.

Further cost savings are achieved by reduced errors in assembly through pre-configured control hardware.

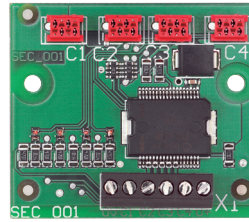
Take advantage of these cost savings for your lift.



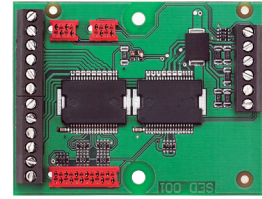
KBC



KBD



SKC



SKD

Shaft Bus Modules

Landing Bus Modules	Function	Connection
KBC	For connection of signals for max. 4 calls / direction arrow display	MicroMaTch pluggable system
KBD	For connection of signals for max. 2 calls and 1 display	MicroMaTch pluggable system
SKC	Short-circuit-safety for KBC, for connection of push buttons / direction arrow displays from other manufacturers	Screw connection
SKD	Short-circuit-safety for KBC, for connection of push buttons / direction arrow displays from other manufacturers	Screw connection
Bus Cable	Pre-configured 5 m, 7 m & 10 m lengths, ready for mounting	Plug connection

Standard dimensions for landing fixtures with KSB (W x H) in mm: 75 x 150 / 100 x 200 / 75 x 255

Variations

Landing fixture one button	T25/ST40	
Landing fixture one button	T25	- Hall Lanterns -
Landing fixture one button	T25/ST40	- Direction Arrows -
Landing fixture full collective	T25/ST40	
Landing fixture full collective	T25	- Hall Lanterns -
Landing fixture full collective	T25/ST40	- Direction Arrows -

Mounting of Bus Components

KBC mounted in landing fixture with T25 (behind push button)
KBC mounted in landing fixture with ST40 (behind push button)
KBD mounted in landing fixture (behind display)